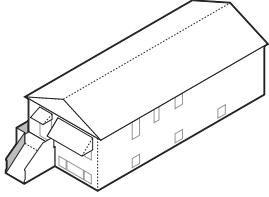




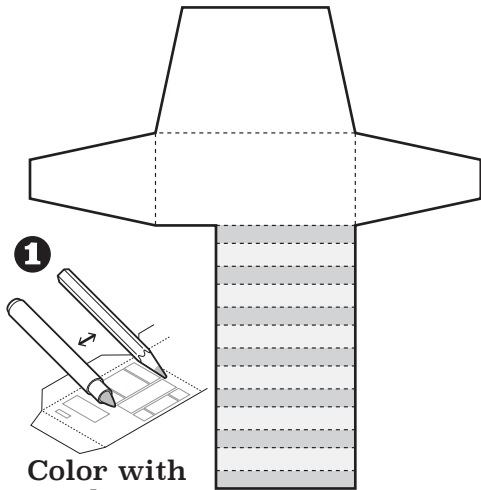
Chicago
Vernacular
Architecture
1:87 Scale Model

Raised Ranch

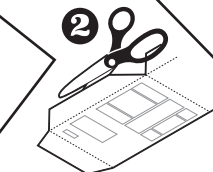
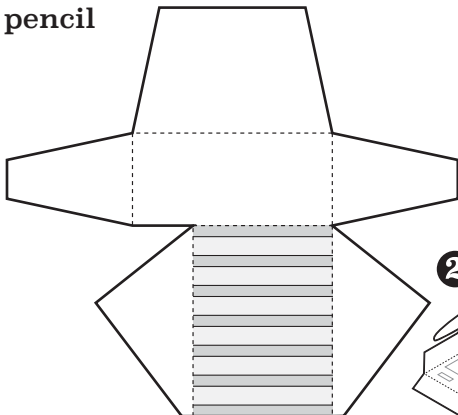


The Ranch style so popular nationwide in the 1940s-60s was adapted to narrow Chicago city lots as the single-story "Raised Ranch" or "Ranch Bungalow." The low, horizontal ranch layout is raised a few feet above ground level atop a spacious basement level.

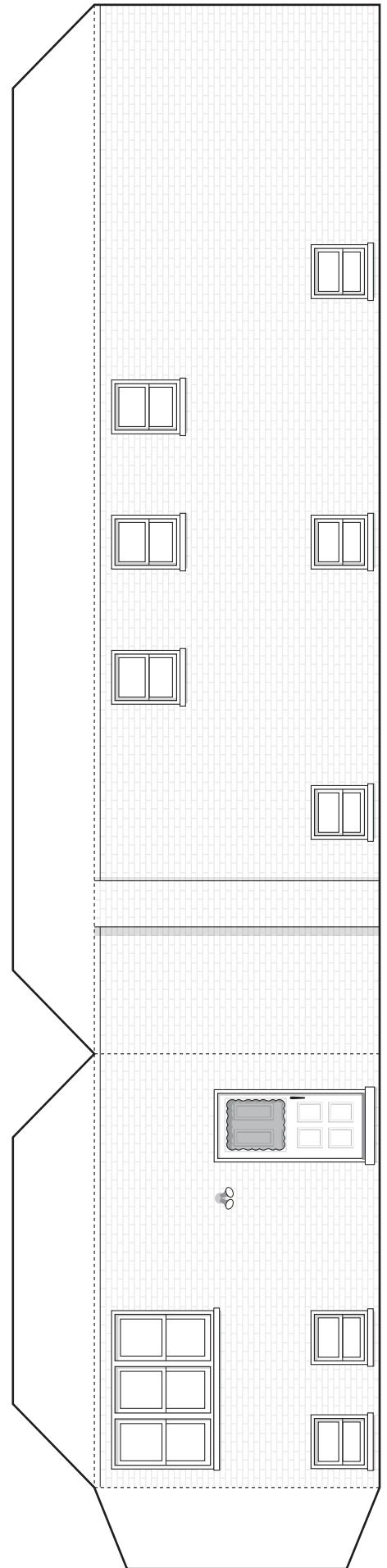
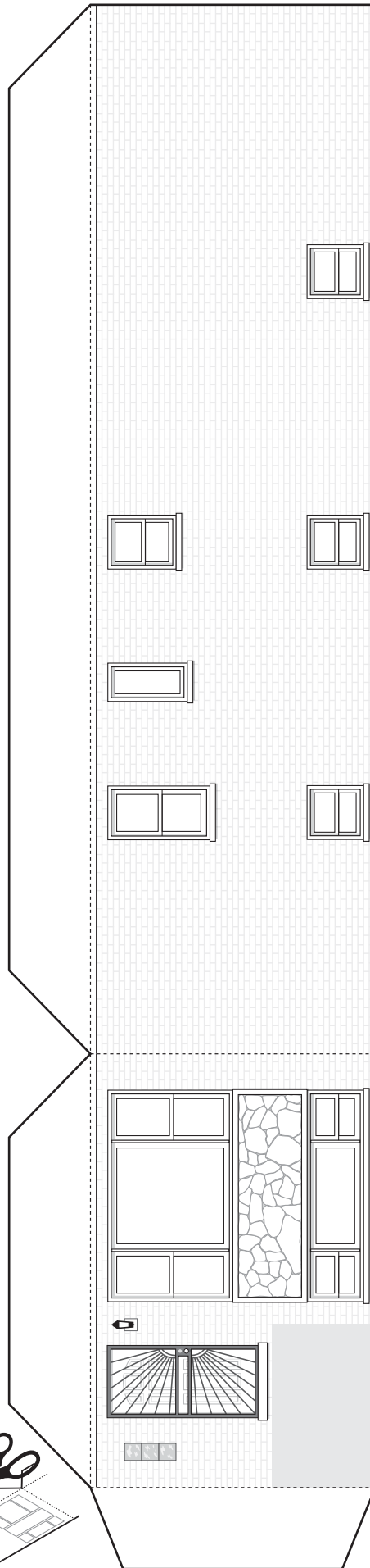
The house's efficient rectangular form made it affordable to many young families during the housing crisis of the post-WWII years. Many were built in outlying areas of Chicago and as infill development.



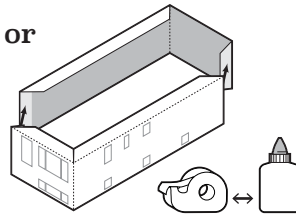
1
Color with
marker or
pencil



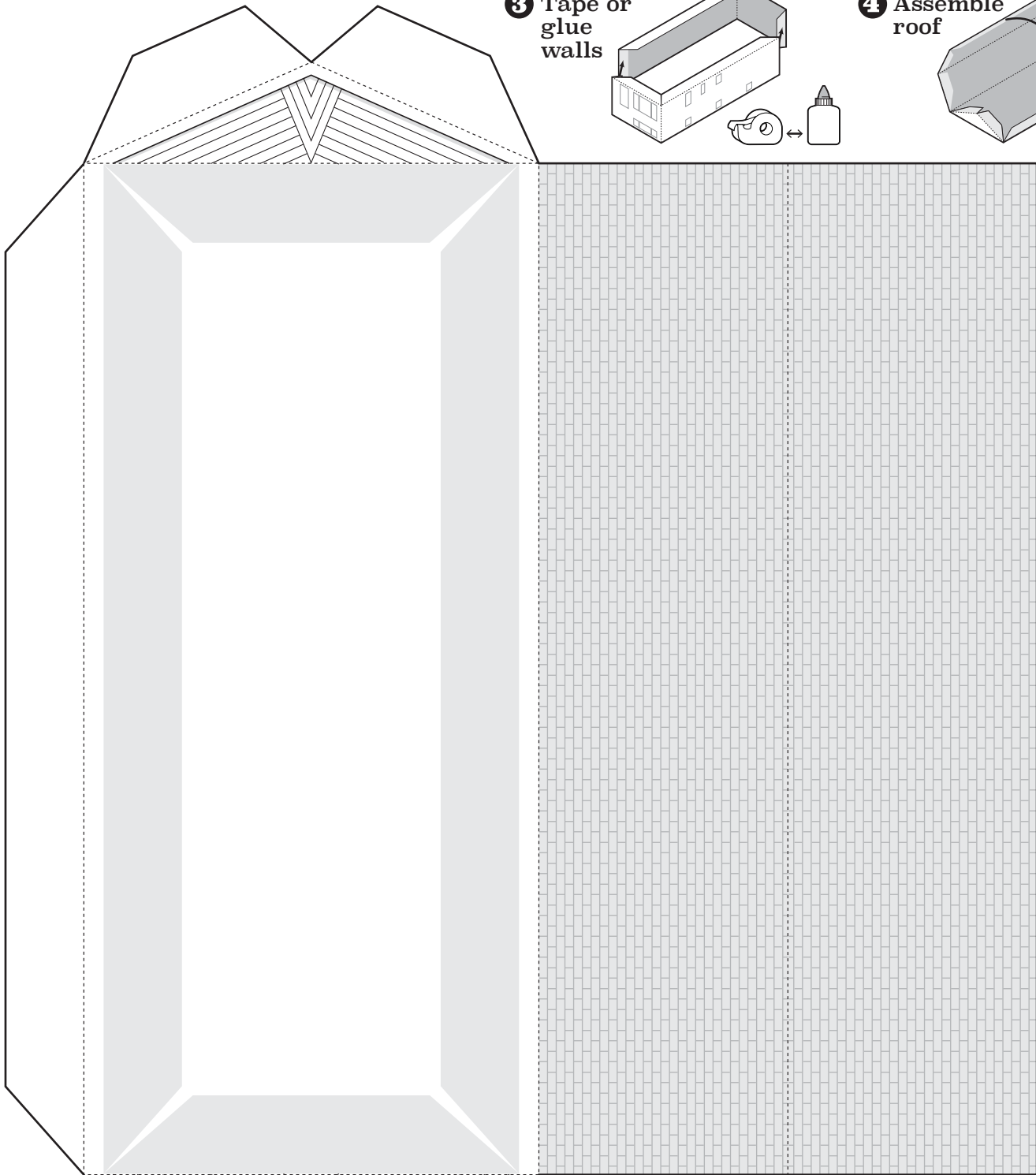
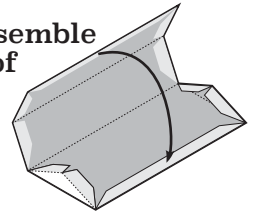
2
Cut on outlines



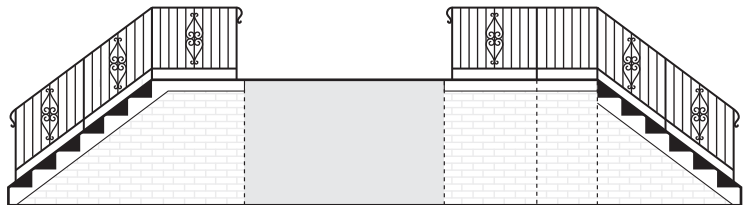
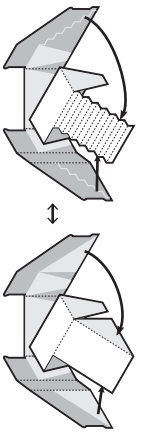
3 Tape or glue walls



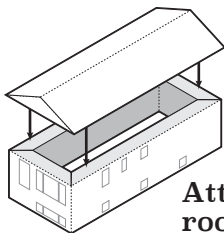
4 Assemble roof



©Matt Bergstrom
Wurlington Press
www.buildyourrownchicago.com

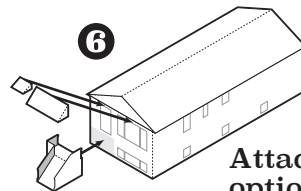


5



Attach roof

6



Attach stairs and optional awnings

