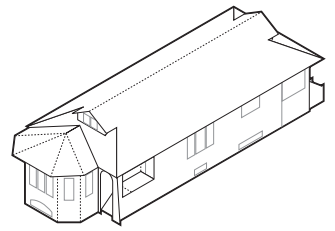




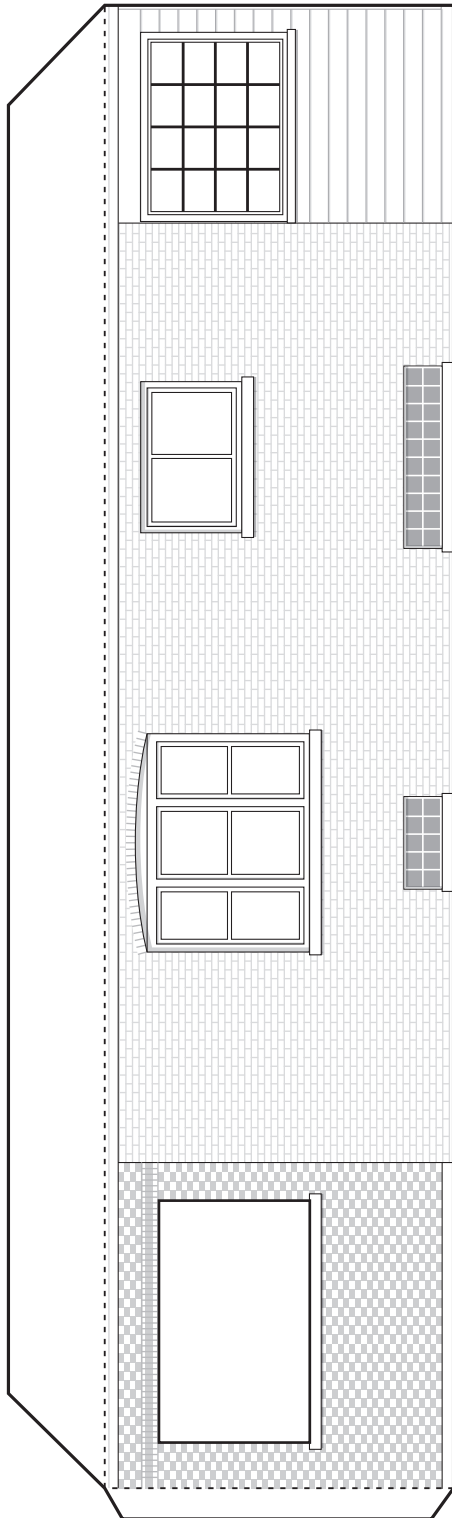
# Bungalow



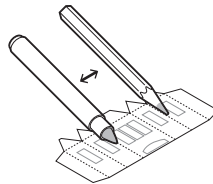
The Chicago Bungalow is a 1-1/2 story single-family house with narrow layout to fit a city lot. The style typically features wide eaves, a prominent bay of windows in front, off-center entrance, and one or more dormer windows. Most are made of brick with simple limestone ornaments and decorative brick patterns.

Chicago's bungalow is patterned after the Arts and Crafts style cottages built in California in the early 1900s built with simple forms and solid proportions with large sheltered porches, and made from humble building materials. In Chicago the bungalow style incorporated the horizontality and brickwork of the Prairie Style. The interior features open layouts with living and dining rooms connected by wide doorways and french doors to front sun porches.

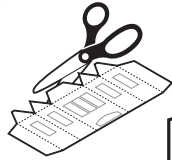
Over 80,000 bungalows were built in the "Bungalow Belt" neighborhoods during the 1910s-20s real estate boom, when Chicago was the fastest-growing city in America.



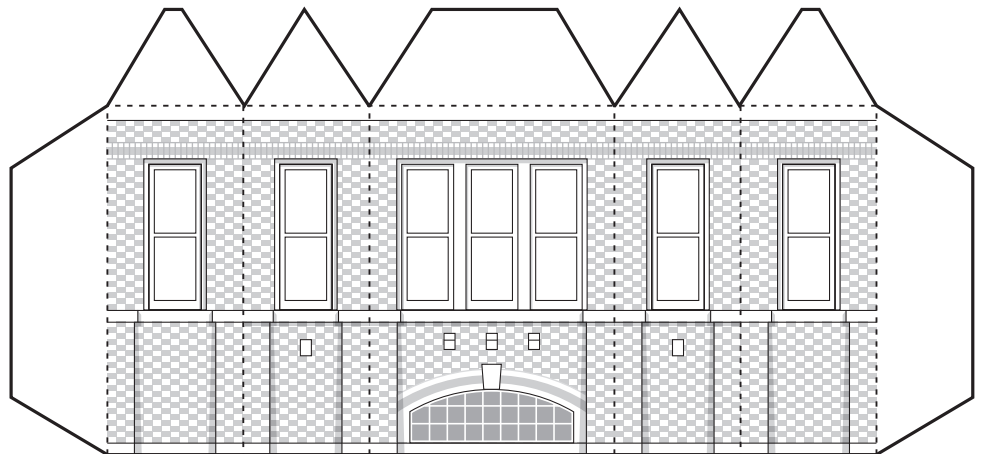
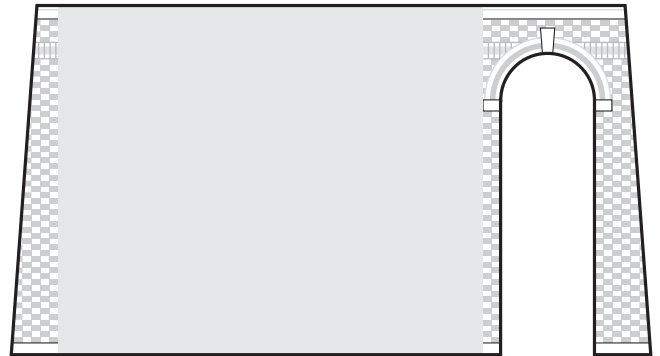
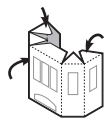
**1** Color with marker or pencil

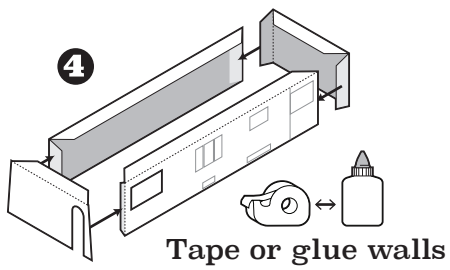
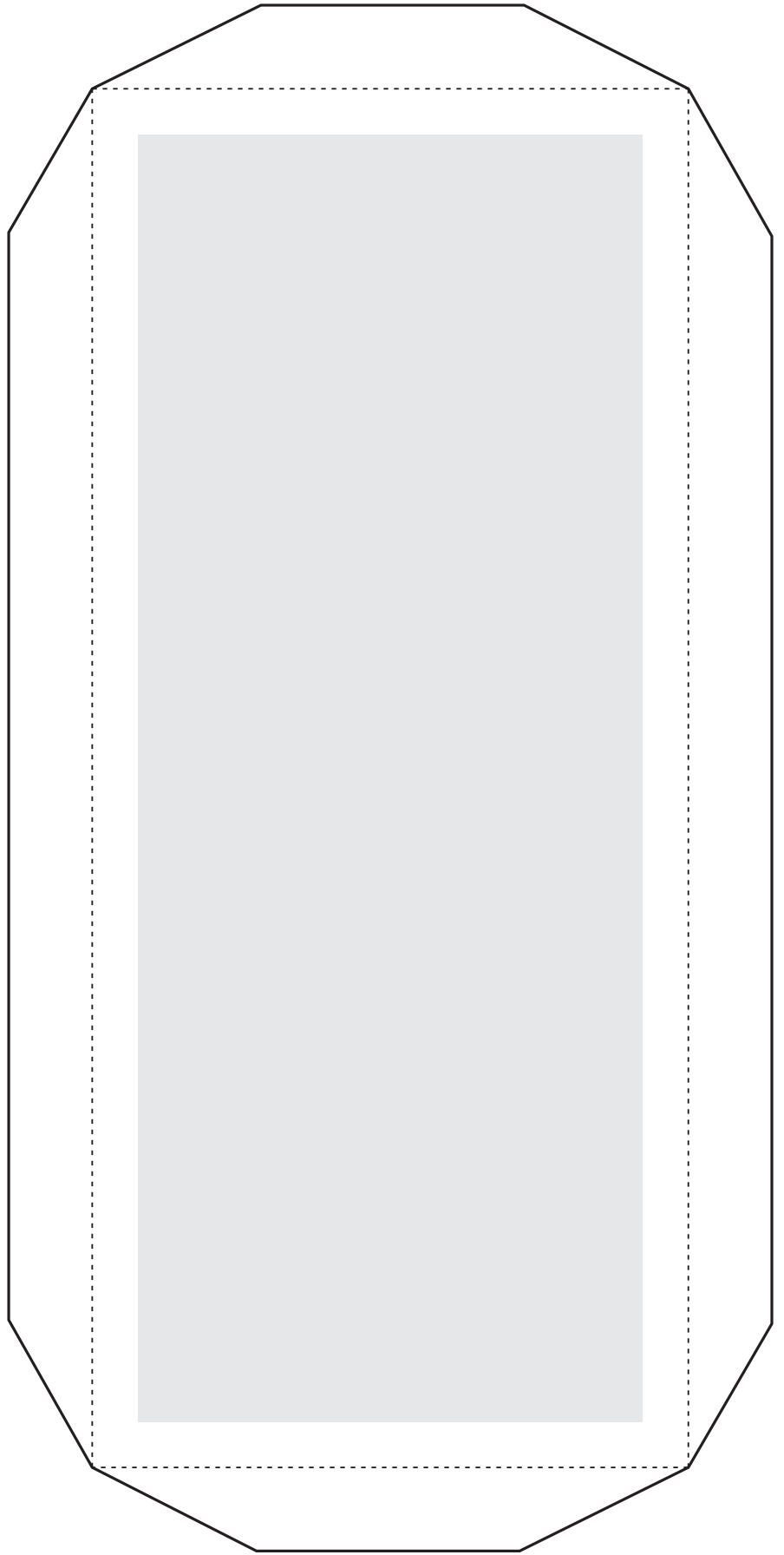
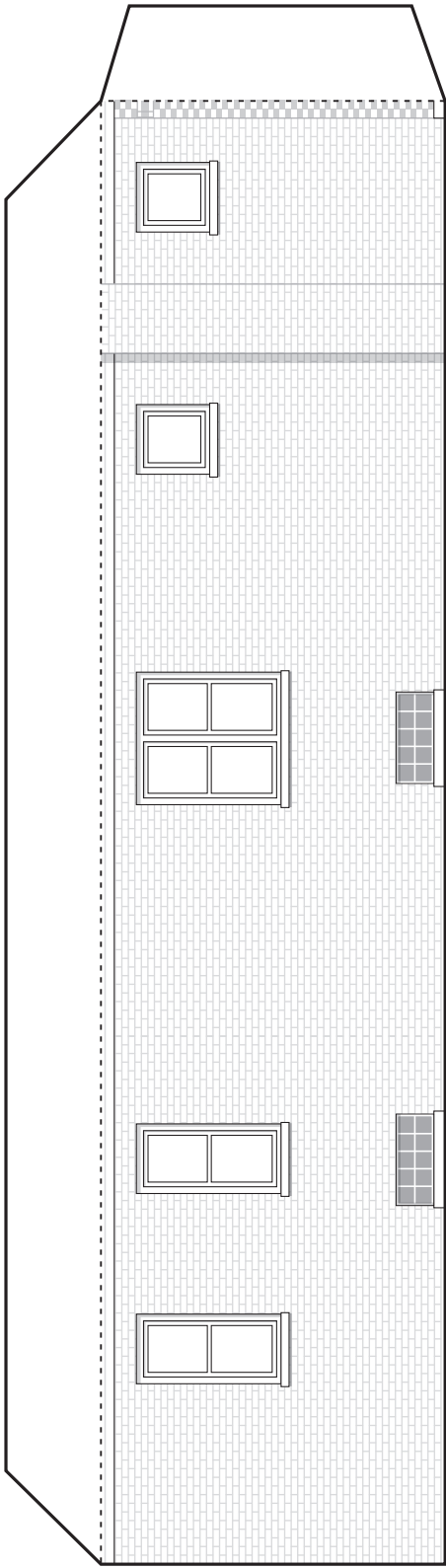


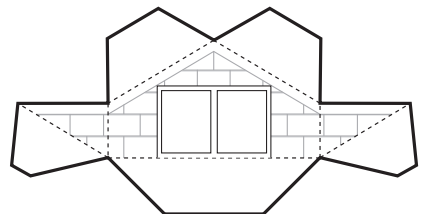
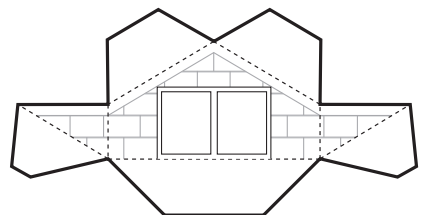
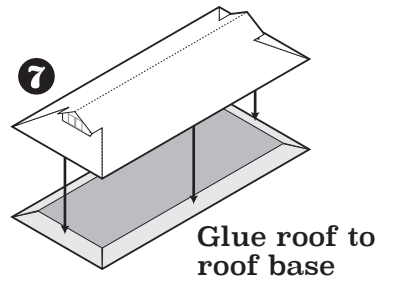
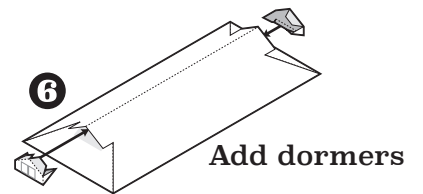
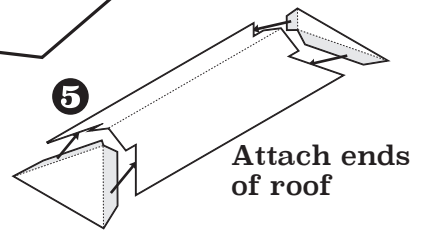
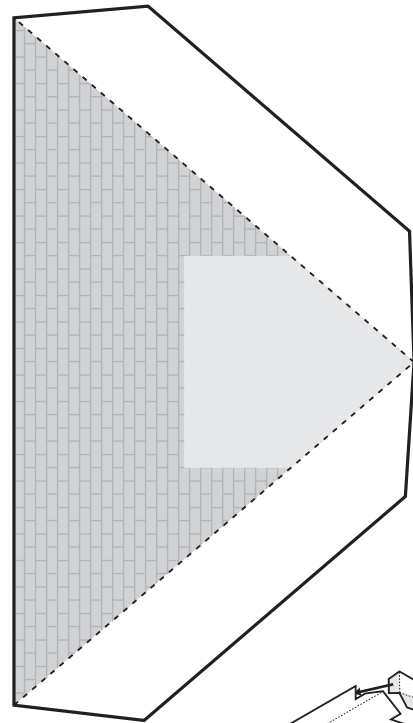
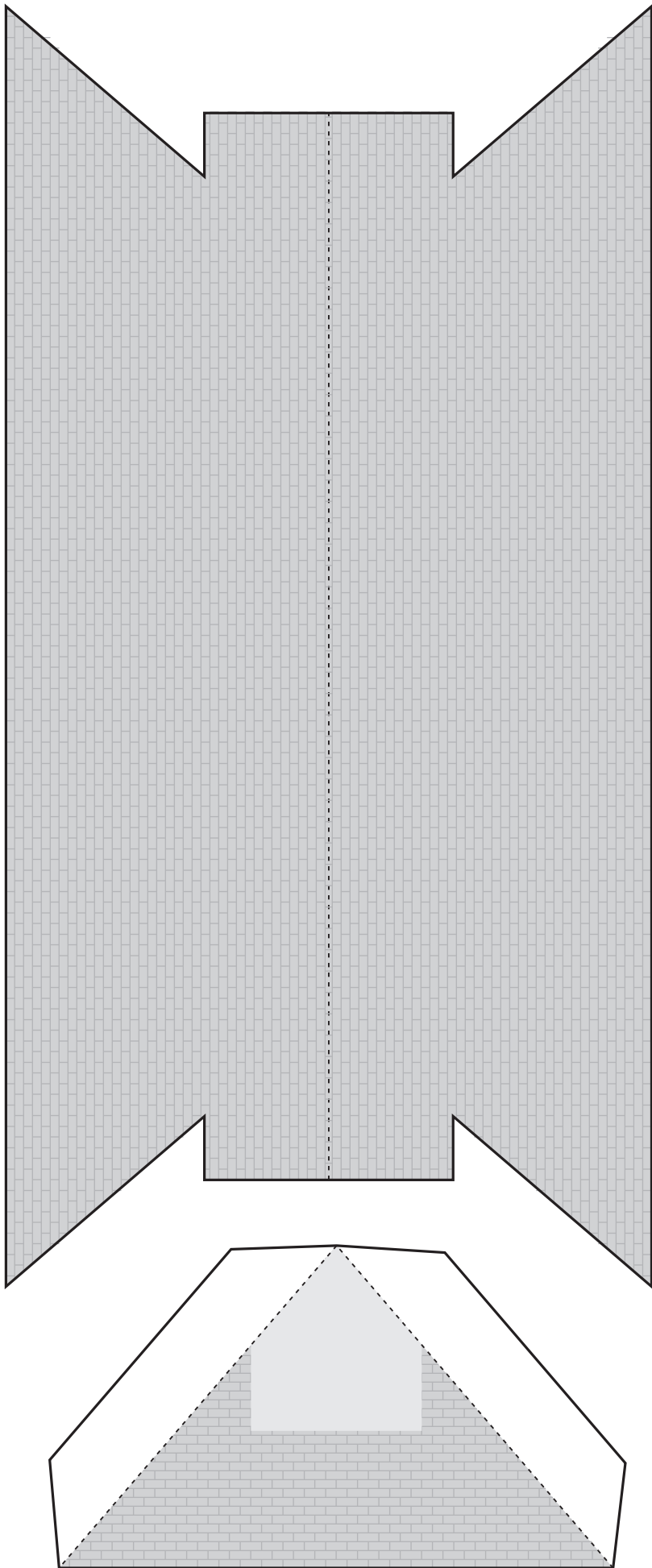
**2** Cut on outlines



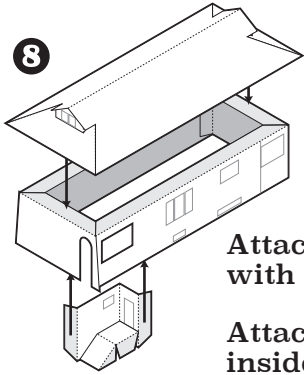
**3** Fold to shape





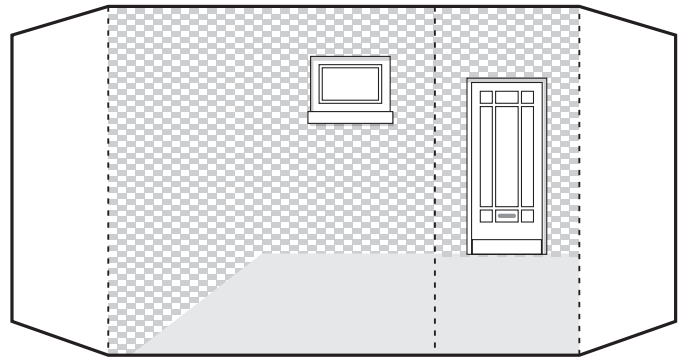


8

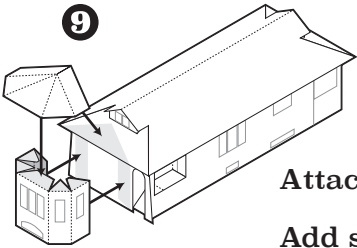


Attach roof to walls  
with glue or tape

Attach entryway  
inside walls

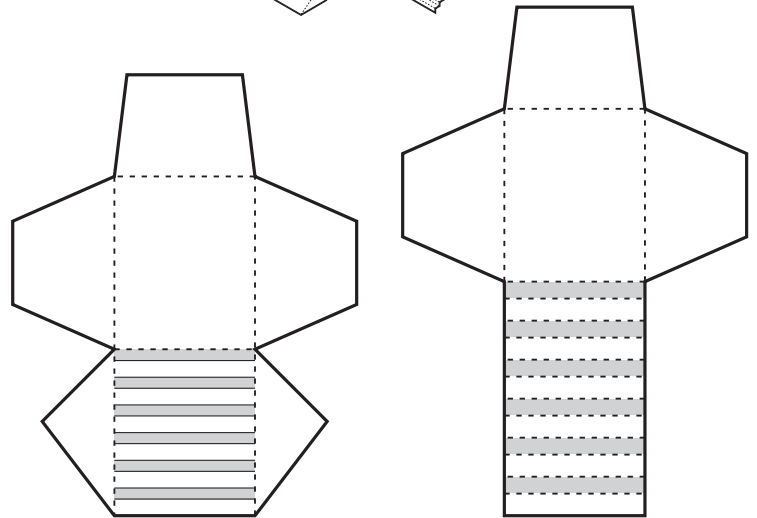
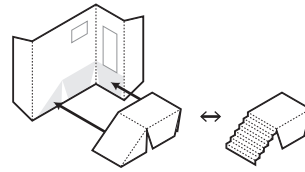


9

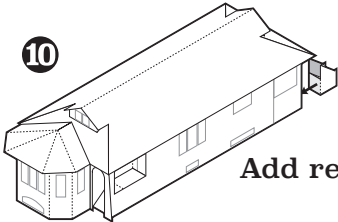


Attach sun porch

Add sun porch roof



10



Add rear steps

